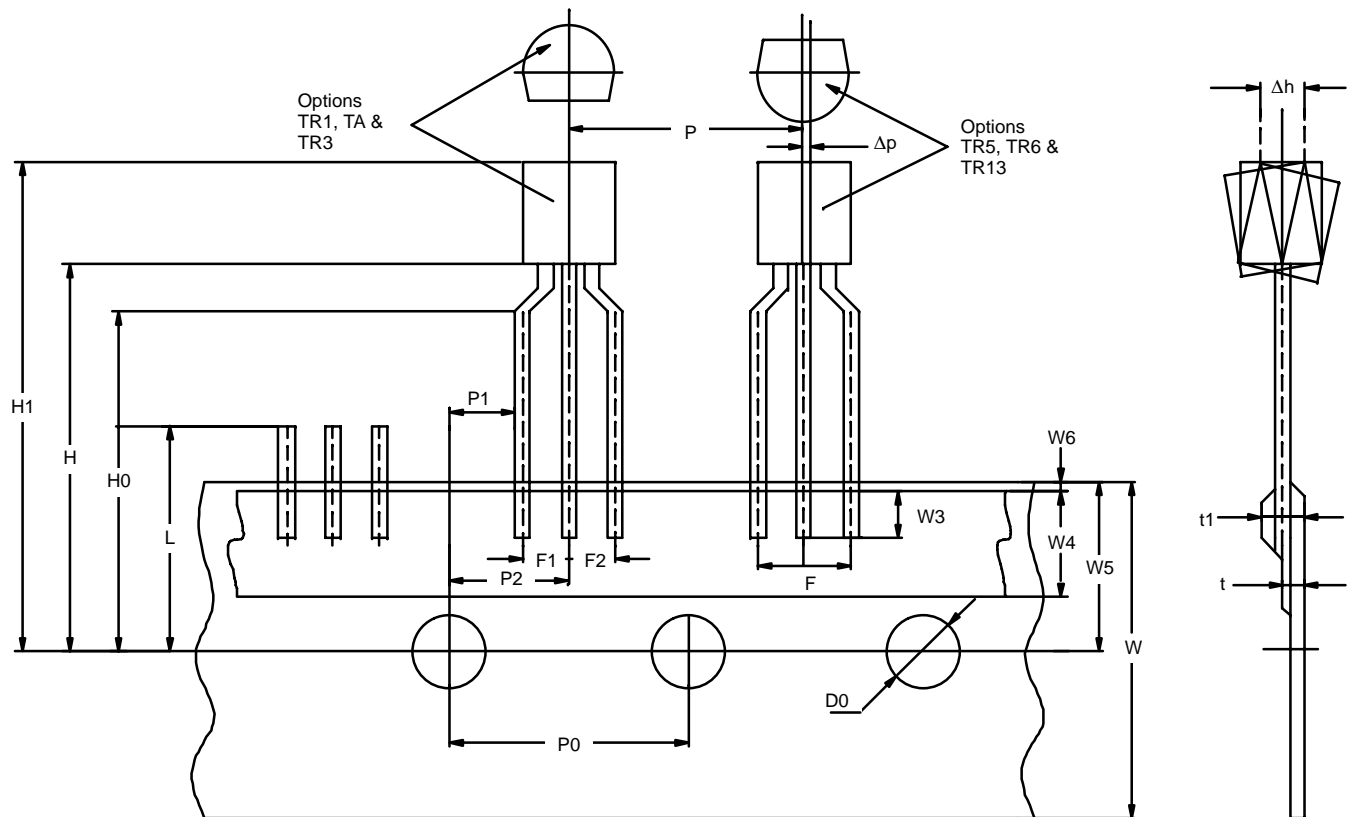




TO-92 WITH FOLDING/WINDING OPTION
Jedec Part Number: TO-226



Dim	MILLIMETERS*		INCHES	
	Min	Max	Min	Max
D0	3.8	4.2	0.149	0.165
F	4.8	5.8	0.189	0.228
F1, F2	2.4	2.9	0.094	0.114
H	17.75	21.5	0.699	0.846
H0	15.5	16.5	0.610	0.649
H1	32.25	32.25	1.269	1.269
L	11.0	11.0	0.433	0.433
P	11.7	13.7	0.461	0.539
P0	12.5	12.9	0.492	0.507
P1	2.45	4.95	0.096	0.195
P2	5.65	7.05	0.222	0.277
t	0.5	0.9	0.019	0.035
t1	1.4	1.4	0.055	0.055
W	17.5	18.5	0.689	0.728
W3	2.0	2.0	0.079	0.079
W4	5.7	6.3	0.224	0.248
W5	8.5	9.75	0.335	0.383
W6	0.0	1.0	0.000	0.039
Δp	0.0	1.5	0.000	0.059
Δh	0.0	1.6	0.000	0.062

* Use millimeters as the primary measurement.

STANDARD PACKING QUANTITY	
Tape and Reel (TR1/TR3/TR5/TR6)	2000
Tape and Ammo (TA/TA13)	1000
ECN: E-00646—Rev. A, 03-Dec-01 DWG: 93-5220-x	

TO-92 WITH FOLDING/WINDING OPTION

Jedec Part Number: TO-226

